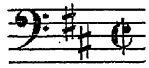


BRAHMS
Symphony No. 2, op. 73, D major
IV: mm. 264-279



264 *f* *sempre più f* *f*

270

275 *sf* *sf* *sf* *sf* *poco f* **M** *largamente*

Detailed description: This block contains the musical notation for measures 264 through 279 of the fourth movement of Brahms' Symphony No. 2. The music is written in bass clef with a key signature of one sharp (F#) and a 4/4 time signature. Measure 264 begins with a forte (*f*) dynamic and a crescendo marking *sempre più f*. It features a series of eighth and sixteenth notes, with accents (*v*) and a fermata over a group of notes. Measure 270 continues the rhythmic pattern. Measure 275 starts with a series of accented notes (*sf*) and concludes with a first ending bracket leading to a *largamente* section marked with a box containing the letter 'M' and the dynamic *poco f*.

I: mm. 56-66

Musical score for Bass, measures 50-66. The score is in G major (one sharp) and 3/4 time. It consists of three staves of music. The first staff (measures 50-57) features a simple eighth-note pattern with fingerings 2, 3, 4, 5, 6, and 7 indicated above the notes. A large bracket on the right side of this staff indicates a section. The second staff (measures 58-62) contains a more complex eighth-note pattern with various articulations, including accents (acc) and slurs (f). The third staff (measures 63-66) continues the eighth-note pattern, ending with a double bar line and a 4-measure rest. A large bracket on the right side of this staff indicates the end of the section. The key signature is G major, and the time signature is 3/4.

V. Romeo and Juliet Before Parting: four after 49 – one before 51

(top octave only)

68 *f* $\frac{1}{2}$ $\frac{1}{2}$ *rit.* **49** *Andante* *pp* **3**

74 *div.* *espressivo* *p* *mf* **50** *pp*

80 *espressivo* *p* *mf* *pp*

84 *espressivo* *div.* *espressivo* *p* *mf* *pp*

1 1 *Cor.* 1 1

84 *espressivo* *div.* *espressivo* *p* *mf* *pp*

Die Zauberflöte

Ouvertüre

Allegro [♩ = 76]

Wolfgang Amadeus Mozart
KV 620

33

p sf p sf p f

36

p f p f sf

41

sf sf

45

sf

49

sf sf